



* Share of Freehold * Situated in a highly convenient Westcliff-on-Sea location, this charming ground floor flat offers two bedrooms, a spacious lounge leading into a modern kitchen, and a delightful west-facing garden. With a share of freehold, a long lease, and no charges, this home represents an exceptional opportunity for first-time buyers, downsizers, and commuters alike.

- Charming Ground Floor Flat
- Modern Kitchen with a Skylight
- Utility Room
- Second Bedroom with Storage
- Share of Freehold
- Spacious Lounge with a Fireplace
- French Doors to the Rear Garden
- Bay Fronted Master Bedroom
- Private West Facing Garden
- Double Glazing and Gas Central Heating

Glenwood Avenue

Westcliff-on-Sea

£250,000



Glenwood Avenue



The property welcomes you with an inviting entrance hall, which leads through to a generous lounge featuring a character fireplace. From here, an opening connects to the modern kitchen, beautifully enhanced by a skylight, providing superb natural light. The kitchen offers space for dining, French doors opening onto the west facing garden, and further access into the utility room. Completing the layout is a three piece bathroom, a bay fronted master bedroom, and a second bedroom with built-in storage. Externally, the private west facing garden provides a lovely outdoor retreat. Additional benefits include share of freehold, an extensive lease, no charges, double glazing, and gas central heating.

Positioned along Glenwood Avenue, this flat sits within the desirable catchment areas for The Westborough School and Chase High School. The location offers excellent access to nearby amenities, bus links, Westcliff Train Station, and The Palace Theatre, while also being close to further shops and leisure facilities, making it ideal for a wide range of buyers.

Two Bedroom Ground Floor Flat

Entrance Hall
15'8 x 2'9

Lounge
12'7 x 10'2

Kitchen
10'7 x 9'10

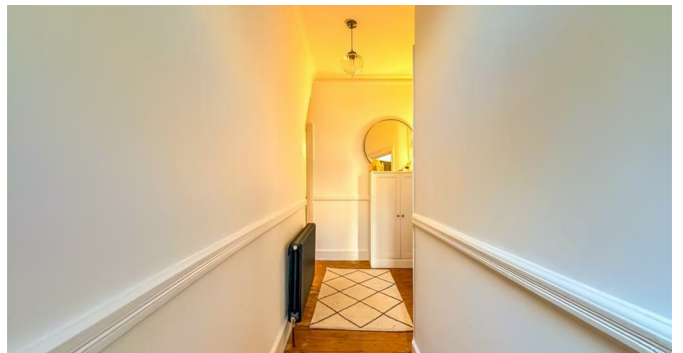
Utility Room
6'10 x 5'6

Bedroom One
14'11 x 12'9

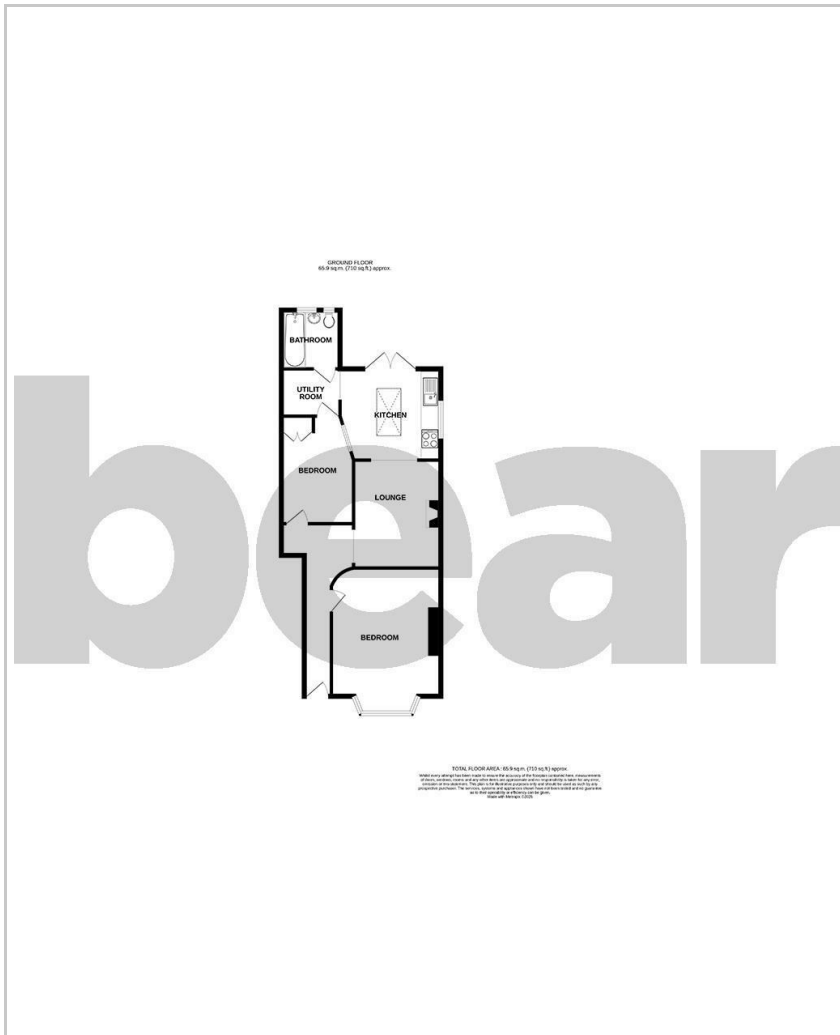
Bedroom Two
12'5 x 8'5

Three Piece Bathroom
10'7 x 6'10

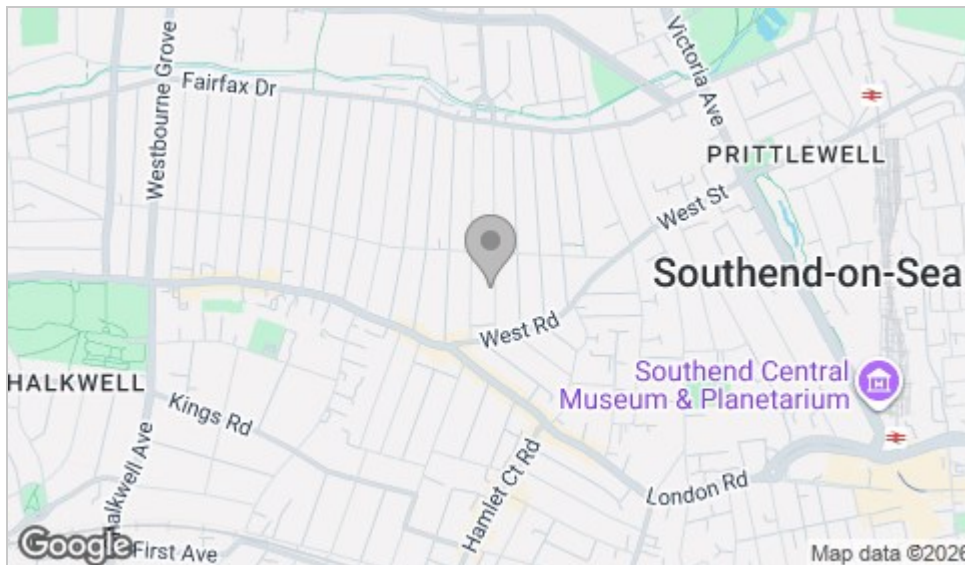
West Facing Garden



Floor Plan



Area Map



Viewing

Please contact our Southend-on-Sea Office on 01702 811211 if you wish to arrange a viewing appointment for this property or require further information.

These particulars, whilst believed to be accurate are set out as a general outline only for guidance and do not constitute any part of an offer or contract. Intending purchasers should not rely on them as statements of representation of fact, but must satisfy themselves by inspection or otherwise as to their accuracy. No person in this firm's employment has the authority to make or give any representation or warranty in respect of the property.

204 Woodgrange Drive, Southend-on-Sea, Essex, SS1 2SJ

Office: 01702 811211 info@bearestateagents.co.uk <https://www.bearestateagents.co.uk>

Energy Efficiency Graph

